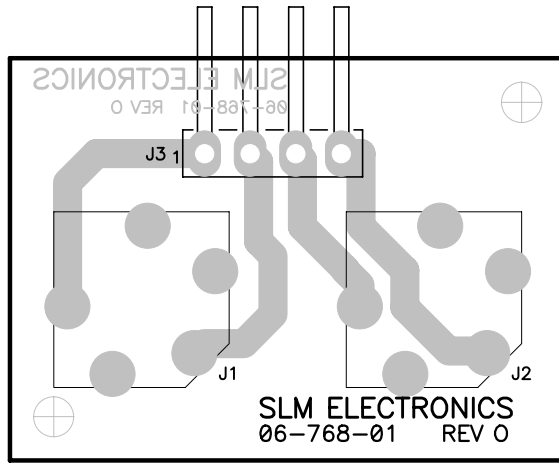


A

B


C

D



NOTES:  
 1. GOOP IN ACCORDANCE WITH PRODUCTION S.O.P.

CAUTION:  
 THIS ASSEMBLY DRAWING IS PROVIDED FOR USE BY QUALIFIED PERSONNEL.  
 TO AVOID RISK OF ELECTRIC SHOCK, REFER SERVICING TO QUALIFIED SERVICE PERSONNEL.  
 DO NOT PERFORM ANY SERVICING BEYOND THAT EXPLAINED IN THE OPERATING INSTRUCTIONS.

O		CONTROL ISSUE				
A		INITIAL ISSUE				
REV	Date	DESCRIPTION	Ecr(s)/Ecn(s)	Chgd By	Appvd by	Date
THE INFORMATION CONTAINED ON THIS DRAWING IS PROPRIETARY TO ST. LOUIS MUSIC, INC						
Signatures:		Date:		 11880 Borman Drive, St. Louis, MO 63146		
Drawn: WFB		4/22/99				
Checked:				First Used On: DX100Ha		
Released:						
Plot Date: Thu Jan 18, 2001		Drawing Size: A		Drawing Title: PWA, SPEAKER JACK		
Plot Time: 08:14:37		Drawing Type: ASSEMBLY		Drawing Number: 07-768-XX		
Tolerance:		Class Code: NONE		Sheet 1 of 1		

A

B

C

D

<b>0</b>		<b>CONTROL</b>				
<b>A</b>		<b>INITIAL</b>				
Rev.	Date	DESC.	ECR(s)/ECN(s)	Chgd by	Appvd by	DATE
THE INFORMATION CONTAINED ON THIS DRAWING IS PROPRIETARY TO						
ST. LOUIS MUSIC, INC.						
			SLM Electronics			
			11880 Borman Drive, St. Louis, MO 63146			
Signatures:		Date:				
Drawn: WFB		4/23/99				
Checked:				First Used On:	DX100Ha	
Released:						
Tolerance:	Drawing Size:	A		Drawing Title:	PWA, SPEAKER JACK	
	Drawing Type:	PL				
	Class Code:			Drawing No.:	07-768-PL	
	Scale:	N/A				

ASSEMBLY PART #

07-768-01

REVISION A

ITEM	QTY	REFDES	P/N	DESC
1	1	PWB1	06-768-01	PWB - SPEAKER JACK
2	1	J3	17-311-04	.156" R/A MFAS156-4-D HEADER
3	2	J1	39-114-04	VERT TRS JACK W/SHUNTS L.S.
		J2		